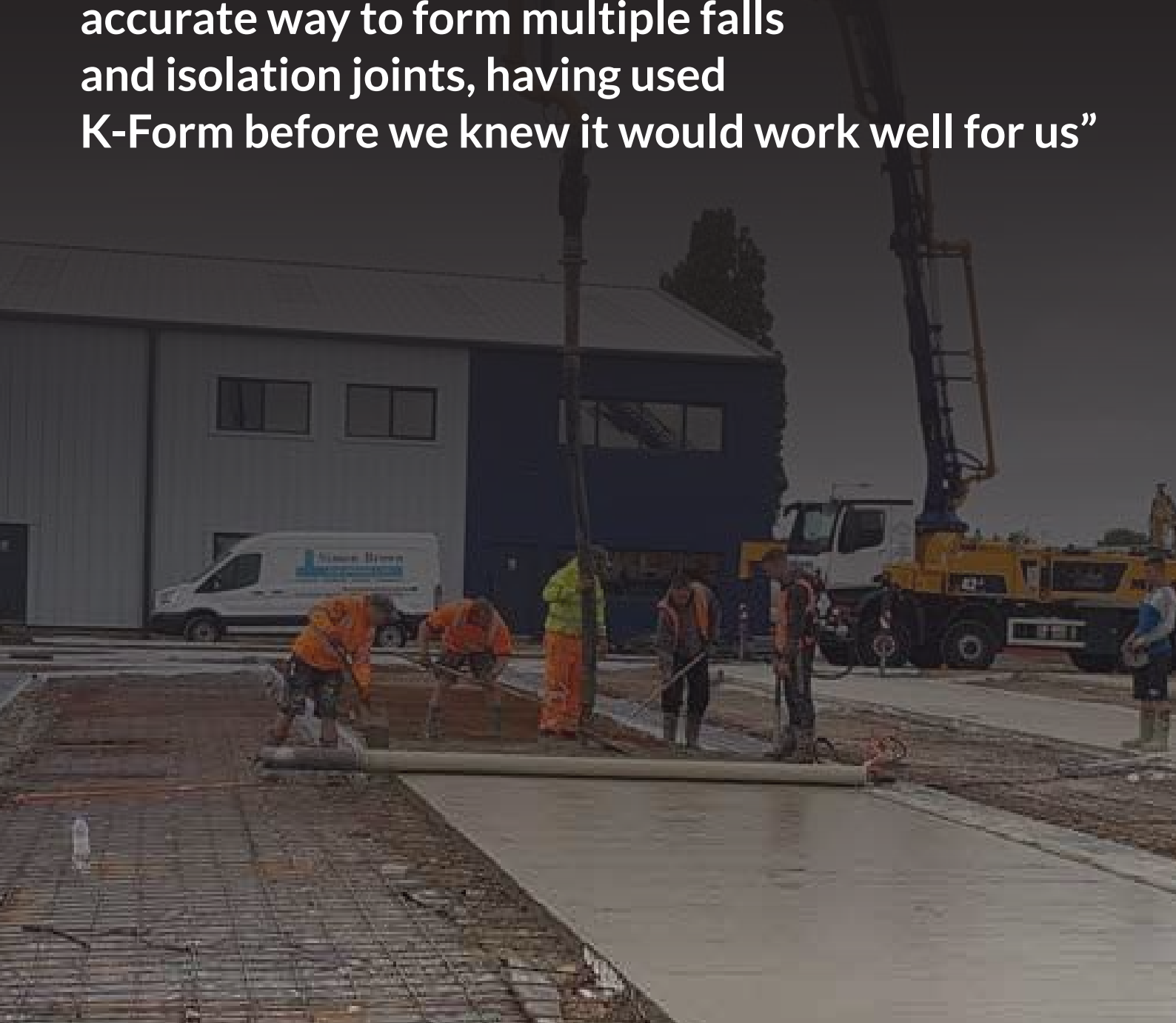


K-Form Case Study

Distribution Facility, Kings Lynn

“We were looking for a quick but accurate way to form multiple falls and isolation joints, having used K-Form before we knew it would work well for us”



K-FORM

Project: New distribution facility
Product: K135
Location: Kings Lynn
Customer: CJ Rust
Contractor: Simon Brown Formwork
Completed: July 2019



The Project

Our customer needed to install drainage into a large concrete distribution area which also had falls from entrance areas of buildings at different levels. The contractor had a limited time period to complete the work schedule and therefore required a solution to enhance productivity and efficiency.

How it works

K-Form K135 Screed Rail was the right solution for this project and, being a sacrificial screed railing system with a built in isolation joint in the vertical section, it allowed the contractor to set up adjoining bays with falls to allow bigger areas to be poured at the same time. Compared with using timber shutters the process time was dramatically increased and there were no hit and miss bay areas poured. In addition, there was no need to strike out timber to repeat the process afterwards.

The Solution

K-Form was used to form quick but accurate multiple falls and isolation joints. Simon Brown had successfully used K-Form before on traditional flat slabs and immediately saw the benefits on this more complicated project incorporating slot drainage.



30 Sturmi Way, Pyle, Bridgend CF33 6BZ

Tel: 01656 746071 | www.kform.co.uk | enquiries@kform.co.uk